

DURDEN & HUNT

INTERNATIONAL



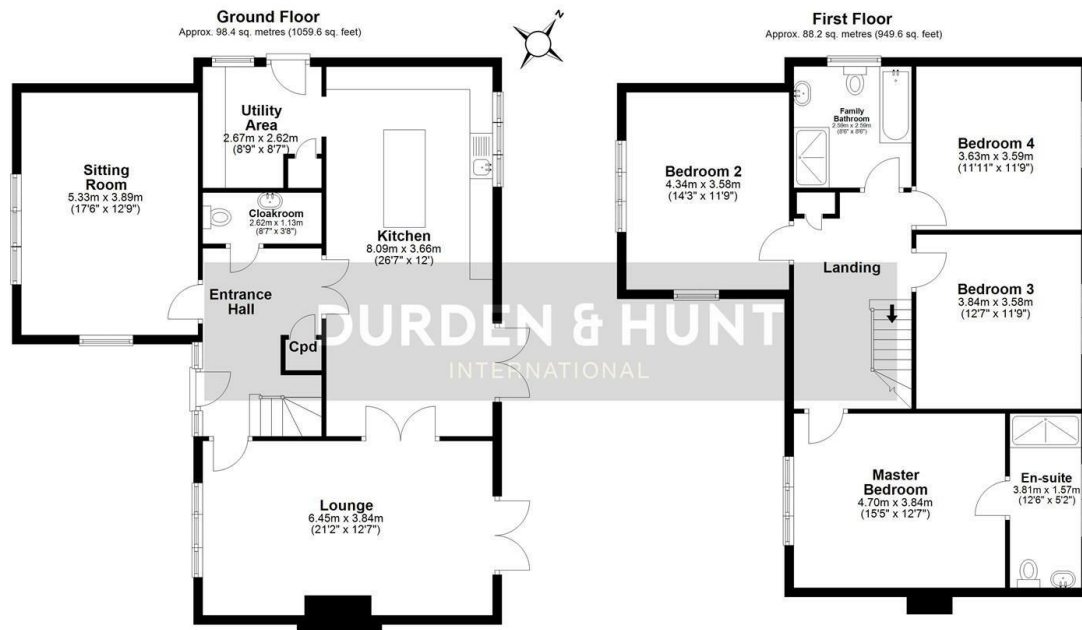
Harwich Road, Manningtree CO11

Offers In Excess Of £750,000

- Chain Free
- Spacious Garden
- Kitchen With Integrated Appliances
- Three Additional Bedrooms
- New Build Home
- Modern Throughout
- Dining Space And Utility Room
- Large Driveway
- Multiple Reception Rooms
- Primary Bedroom With En Suite

1-3 Crouch Street, Colchester, CO3 3EN

<https://www.durdenandhunt.co.uk>

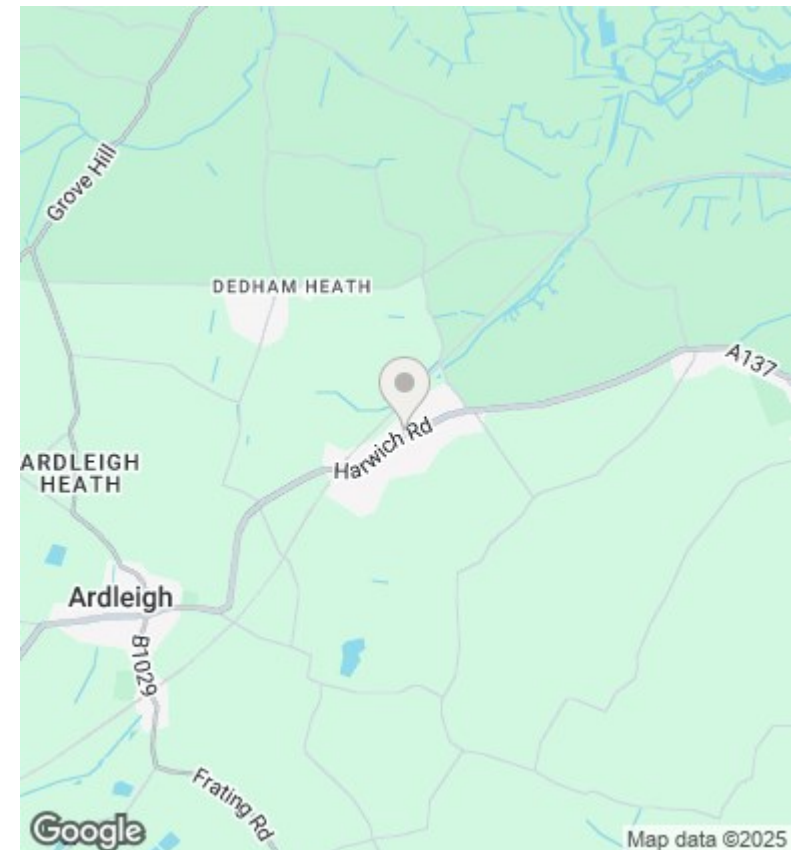


Total area: approx. 186.7 sq. metres (2009.2 sq. feet)

All measurements have been taken as a guide to prospective buyers only and are not precise. This plan is for illustrative purposes only and no responsibility for any error, omission or misstatement. The services, systems and appliances shown have not been tested and no guarantee as to their operability or efficiency can be given. Measurements may have been taken from the widest area and may include wardrobe/cupboard space. No guarantee is given to any measurements including total areas. Buyers are advised to take their own measurements.

© @modephoto.uk | www.modephoto.co.uk
Plan produced using PlanUp.co.uk

Harwich Road, Lawford



Viewings

Viewings by arrangement only. Call to make an appointment.

Council Tax Band

C

EPC Rating:

Energy Efficiency Rating		
	Current	Potential
Very energy efficient - lower running costs		
(92 plus) A		
(81-91) B		
(69-80) C		
(55-68) D		
(39-54) E		
(21-38) F		
(1-20) G		
Not energy efficient - higher running costs		
England & Wales	EU Directive 2002/91/EC	